

Figure 3.E

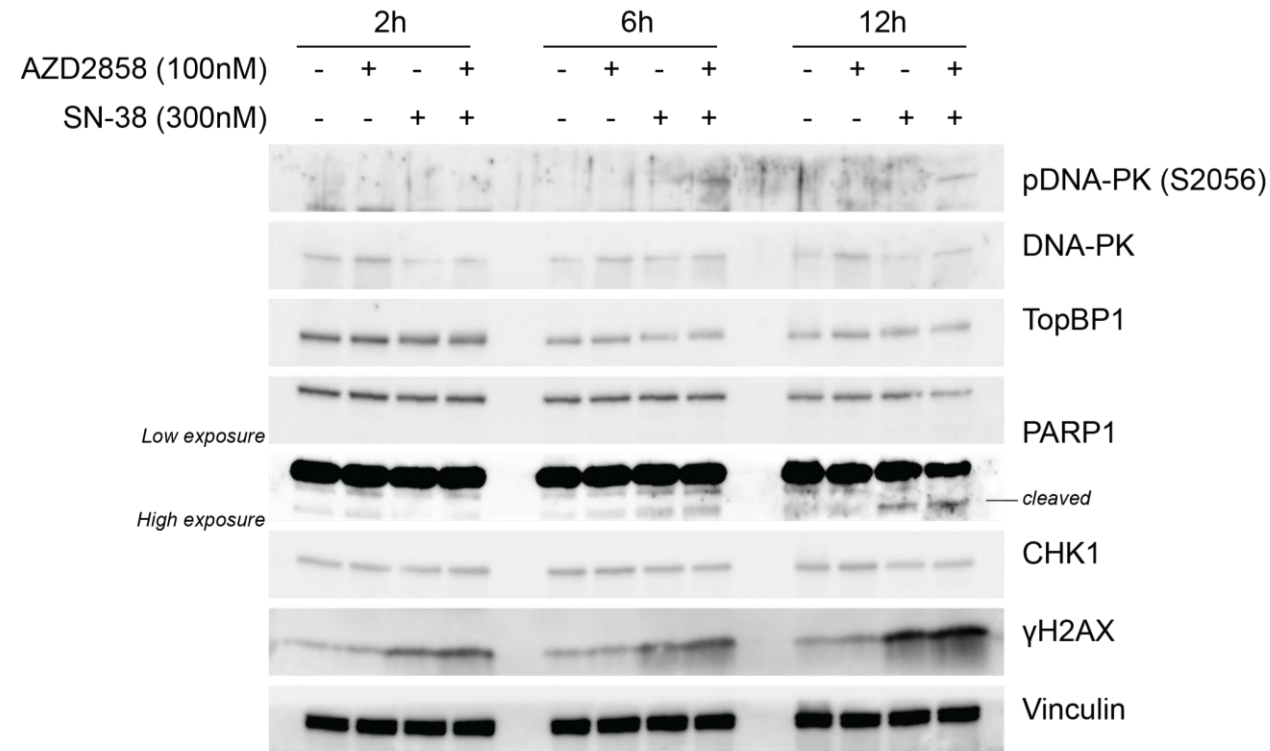
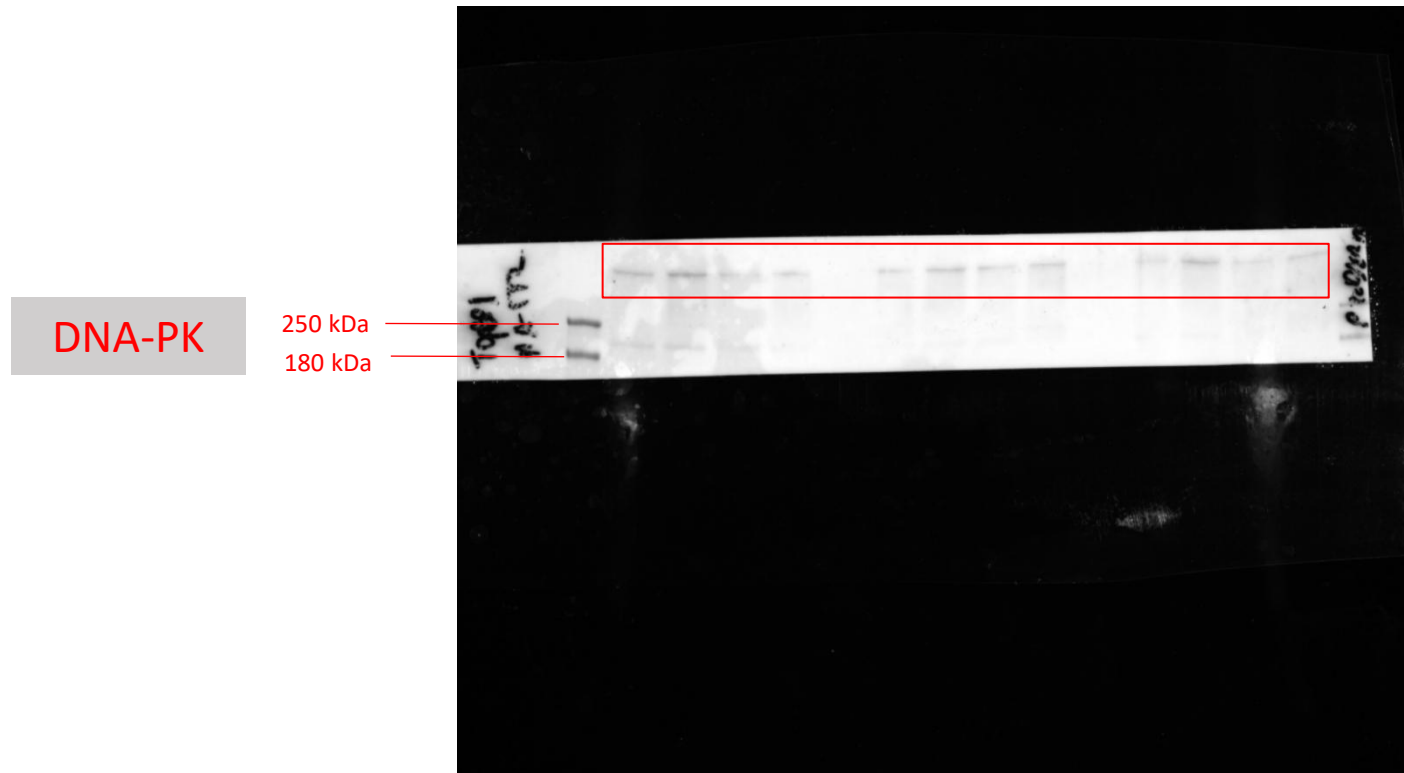


Figure 3E, Source Data 1. Below are the Original membranes corresponding to Figure 3E Immunoblot of the indicated proteins after incubation with AZD2858 (100 nM) or/and SN-38 (300 nM) for the indicated times. The experiment was replicated 3 times, and a representative replicate is shown.

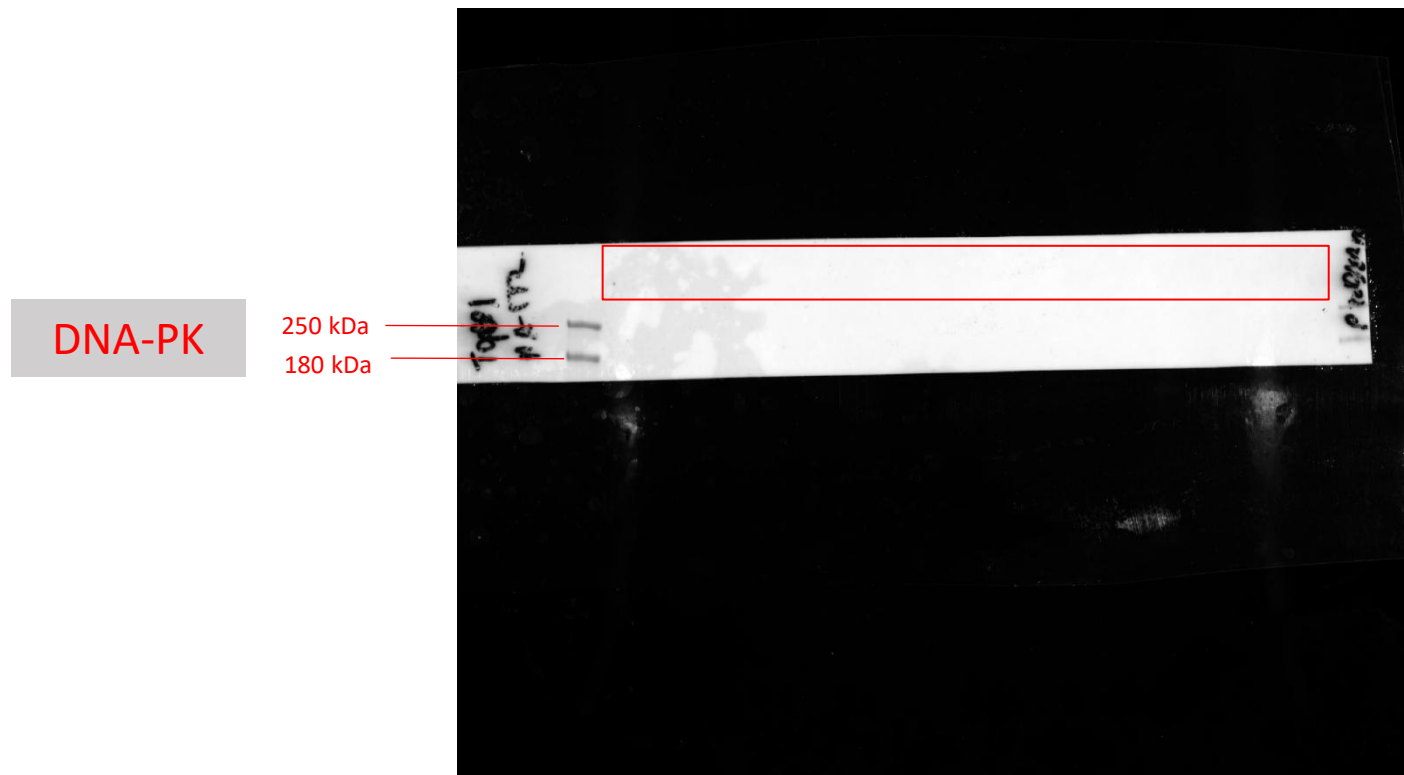
Merge chemiluminescence bands/colorimetric for DNA-PK



Chemiluminescence bands for DNA-PK



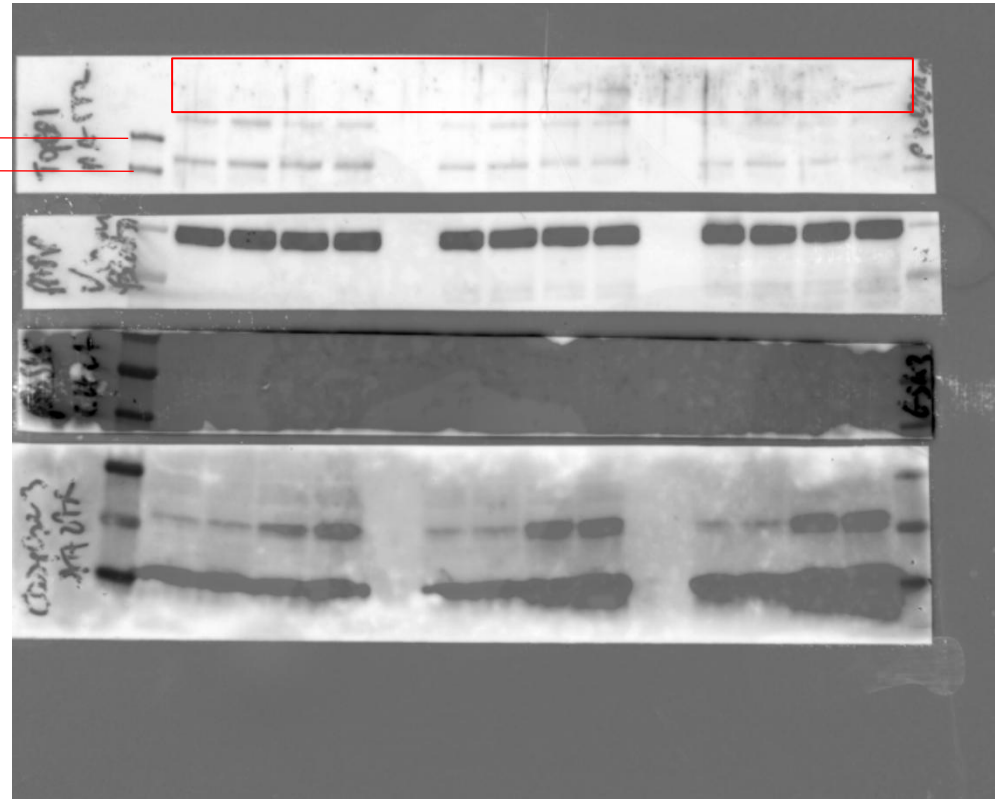
Colorimetric for DNA-PK



Merge chemiluminescence bands/colorimetric for pDNAPK

pDNA-PK
(S2056)

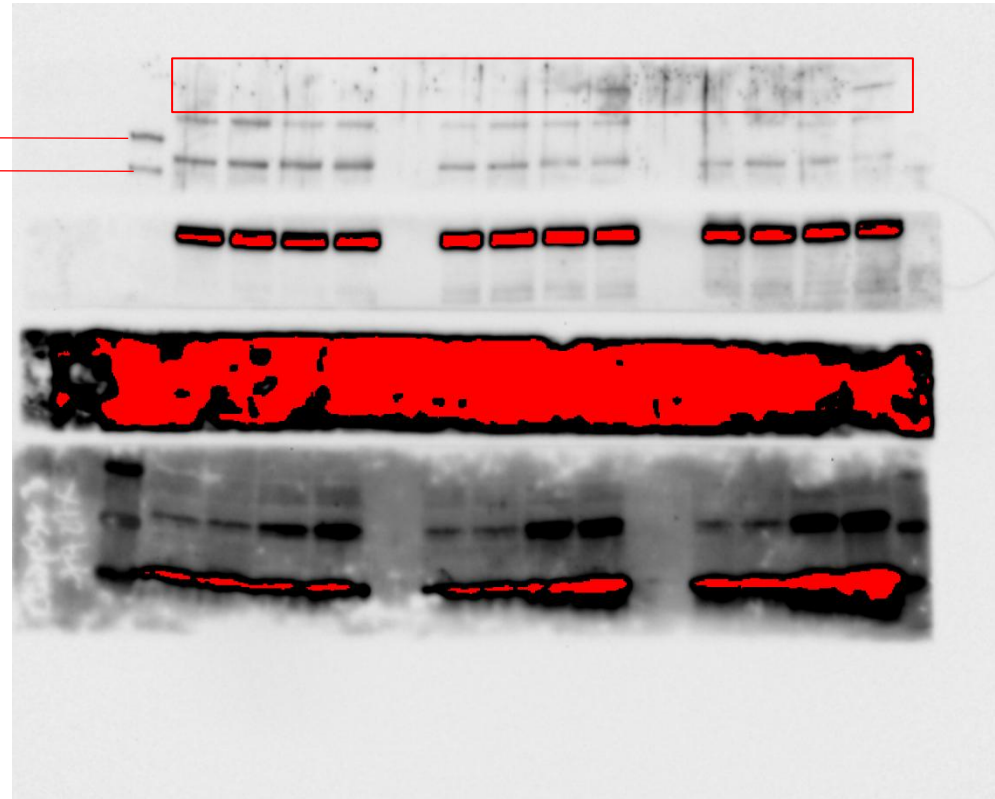
250 kDa
180 kDa



Chemiluminescence bands for pDNA-PK

pDNA-PK
(S2056)

250 kDa
180 kDa



Colorimetric for pDNA-PK

pDNA-PK
(S2056)

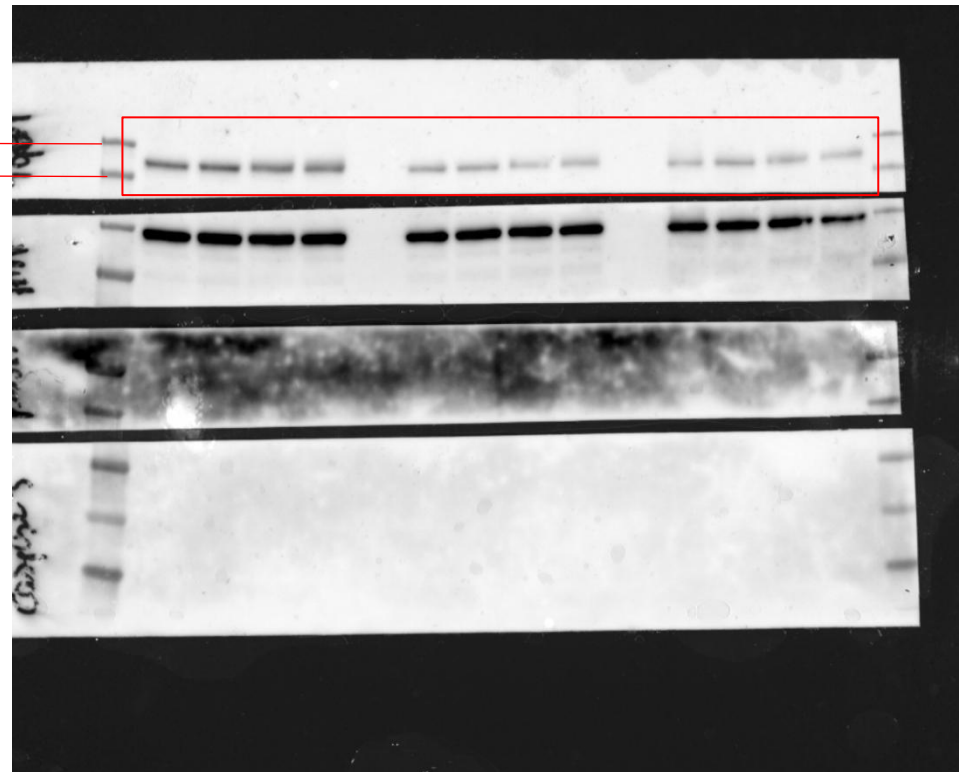
250 kDa
180 kDa



Merge chemiluminescence bands/colorimetric for TopBP1

TopBP1

250 kDa
180 kDa

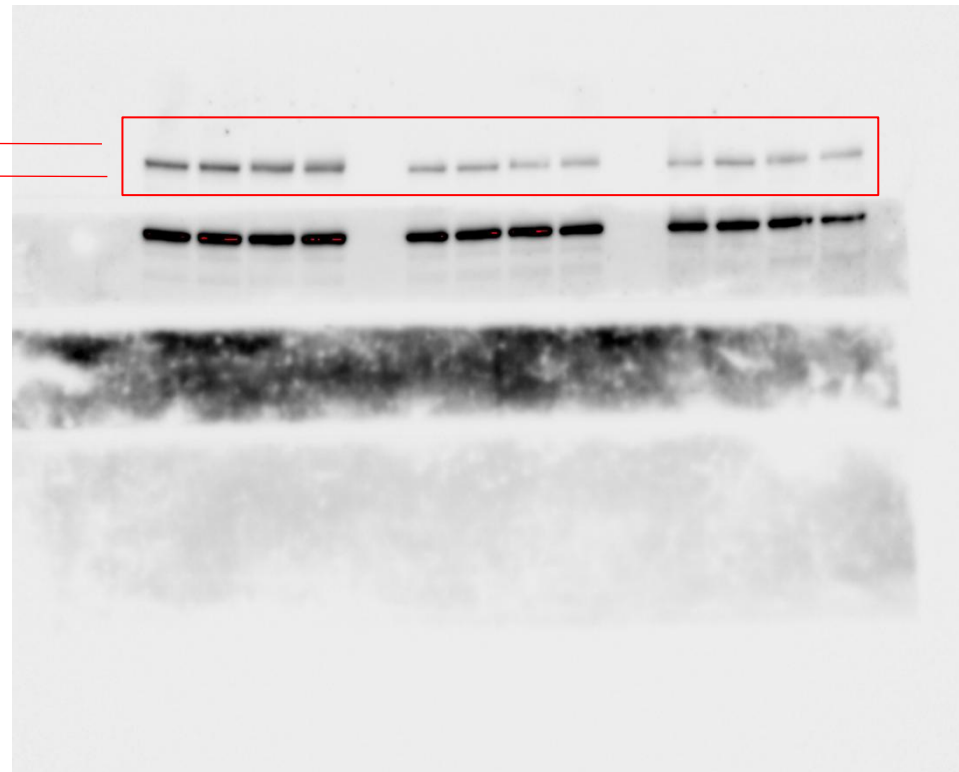


Chemiluminescence bands for TopBP1

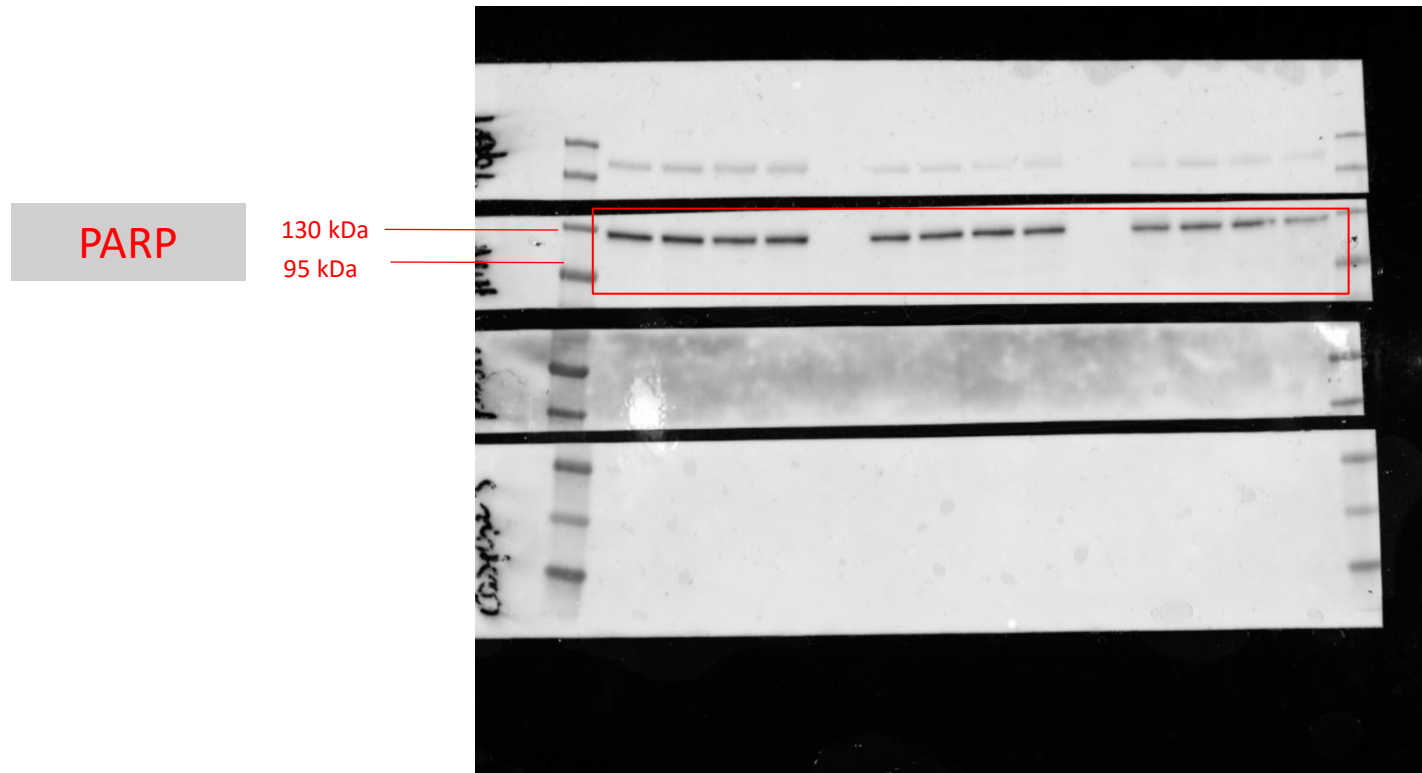
TopBP1

250 kDa

180 kDa



Merge chemiluminescence bands/colorimetric for PARP (low exp)



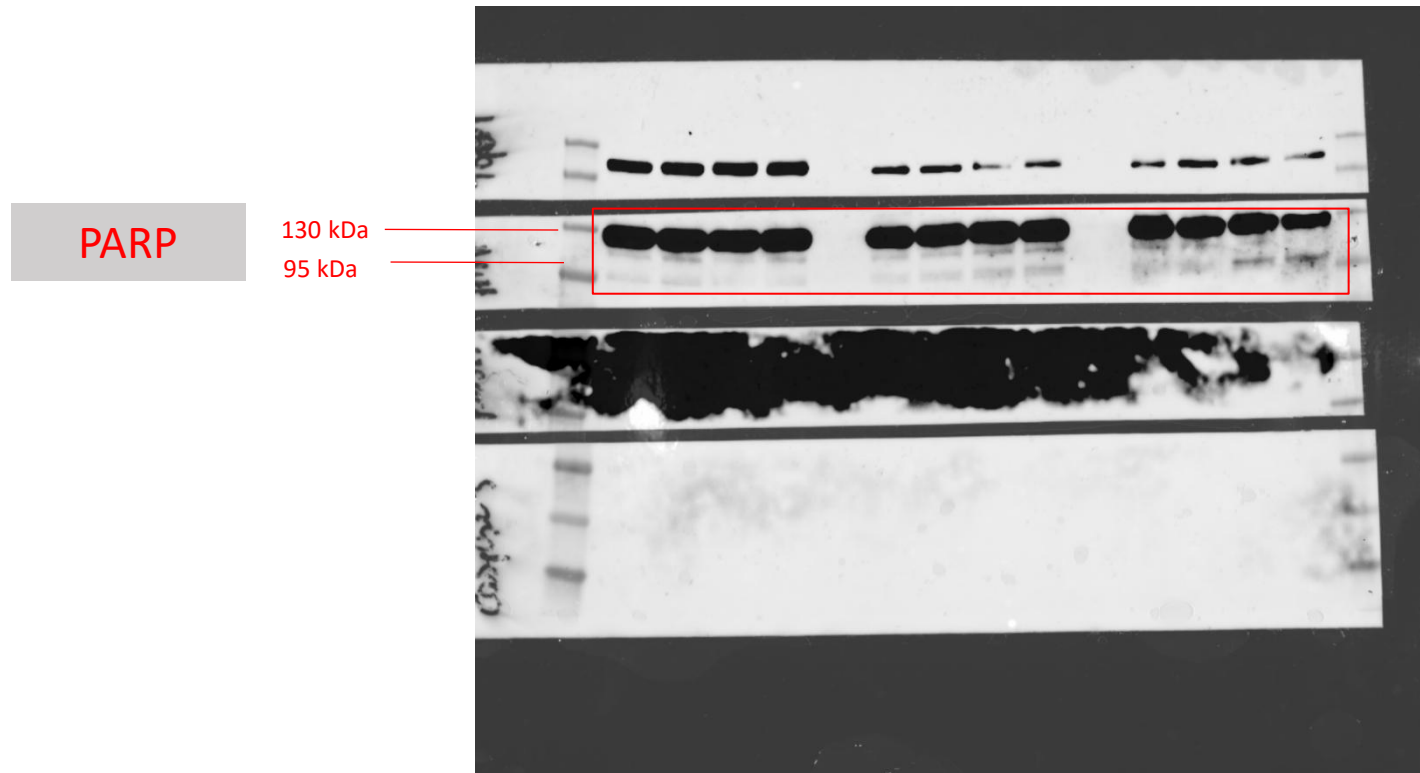
Chemiluminescence bands for PARP (low exp)

PARP

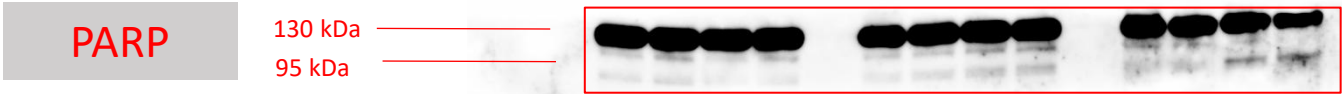
130 kDa
95 kDa



Merge chemiluminescence bands/colorimetric for PARP cleaved (high exp)



Chemiluminescence bands for PARP (high exp)

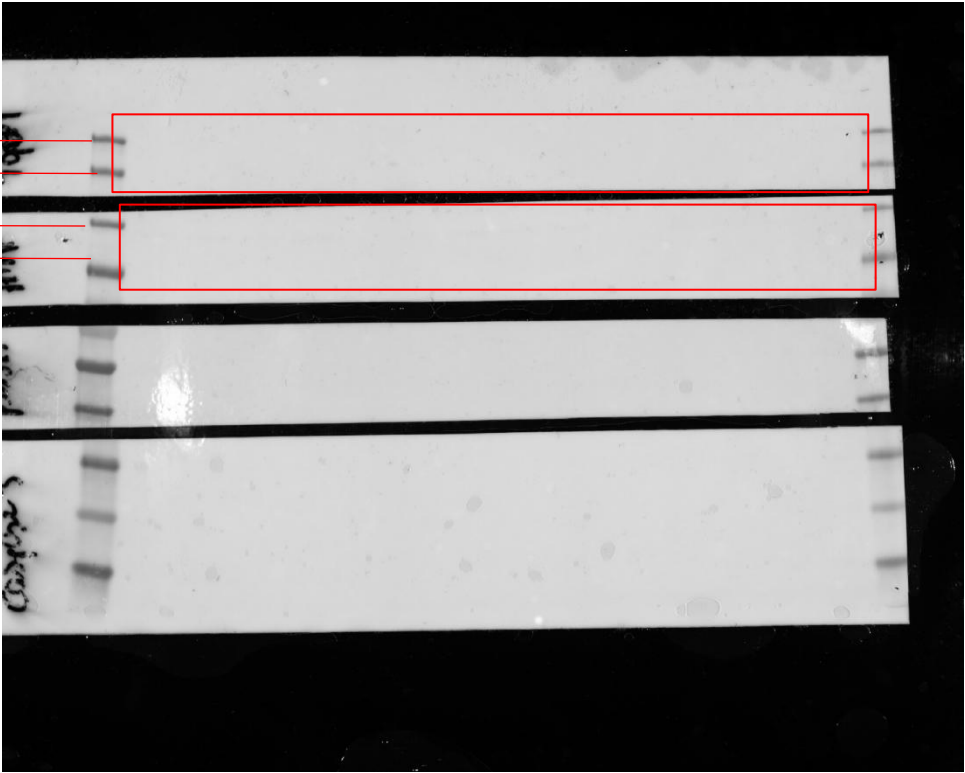


Colorimetric for TopBP1 & PARP

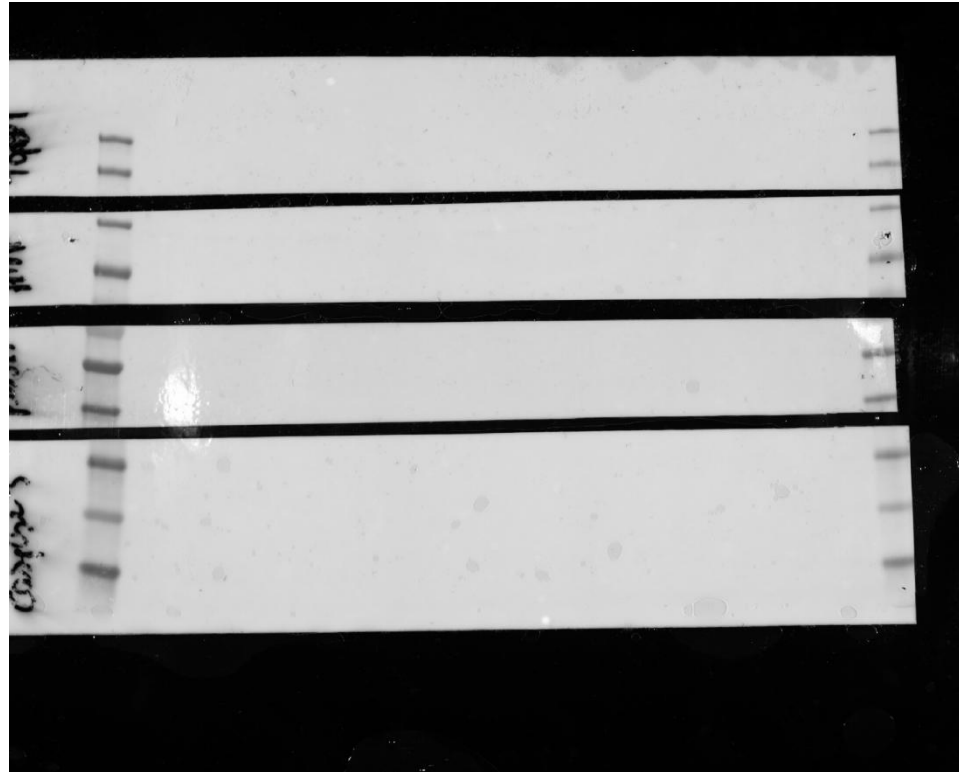
TopBP1

PARP

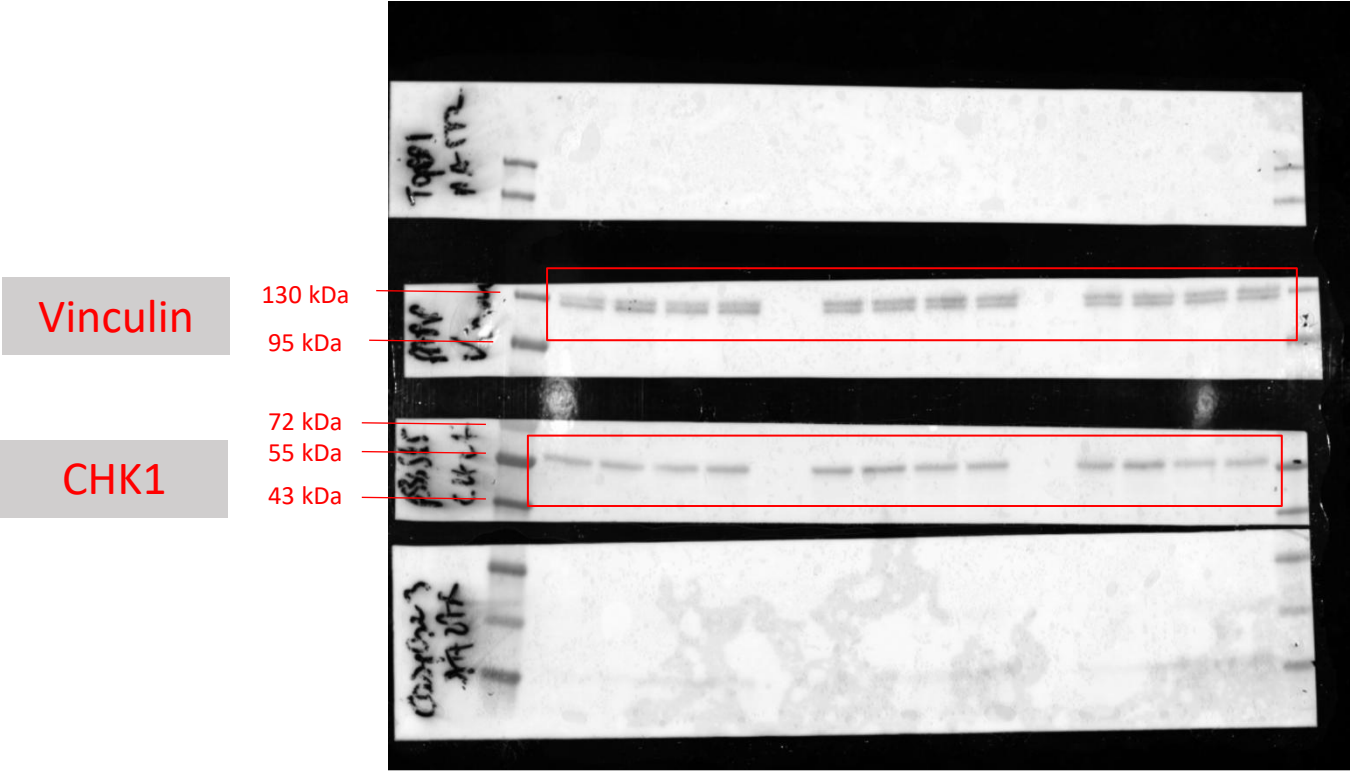
- 250 kDa
- 180 kDa
- 130 kDa
- 95 kDa



Colorimetric for pATR & γ H2AX



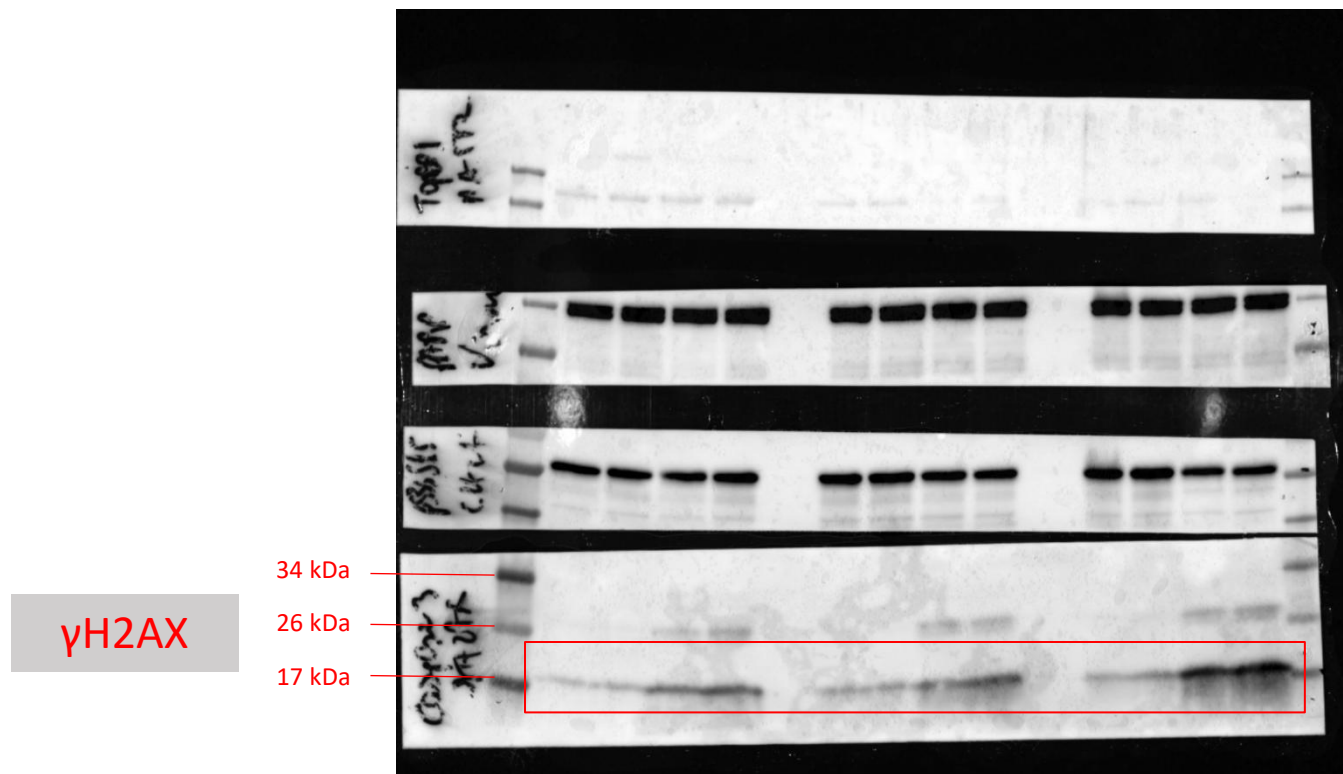
Merge chemiluminescence bands/colorimetric for CHK1 & Vinculin



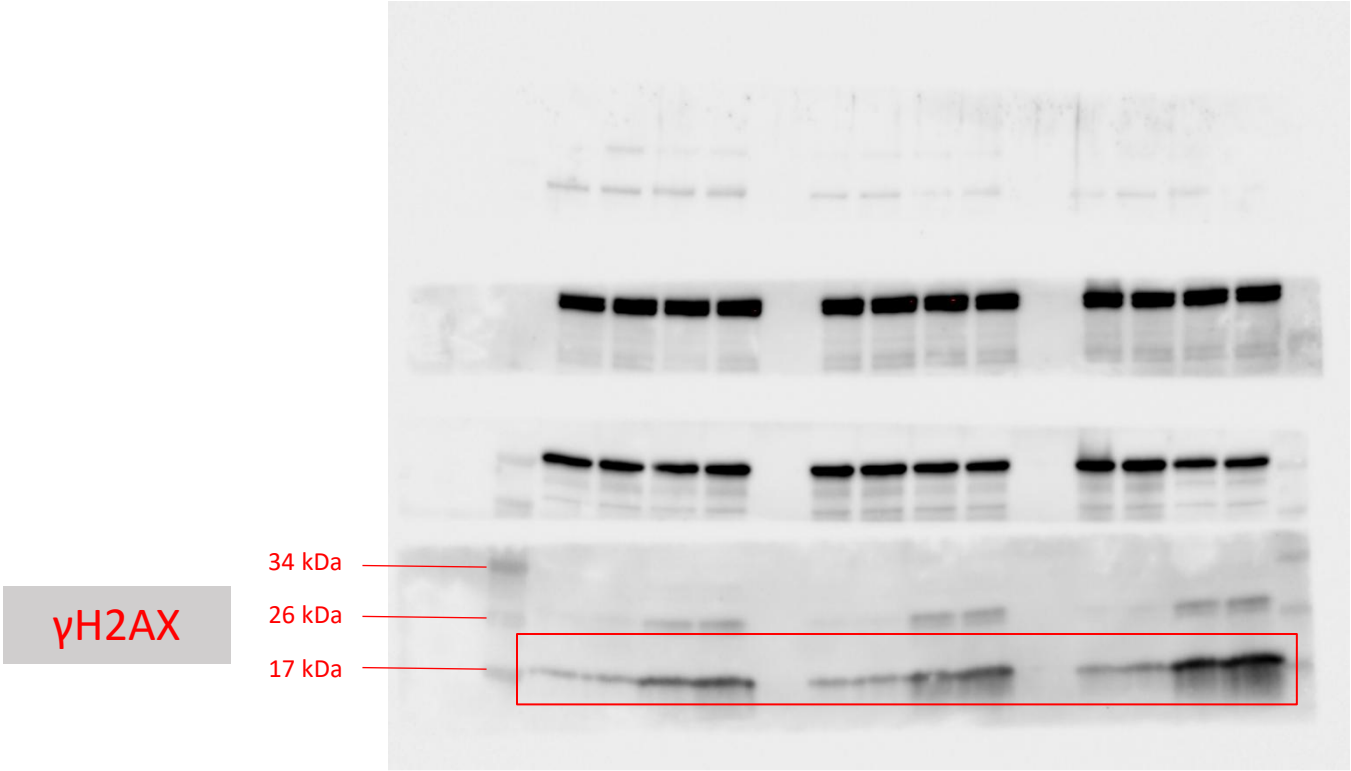
Chemiluminescence bands for CHK1 & Vinculin



Merge chemiluminescence bands/colorimetric for γ H2AX



Chemiluminescence bands for γ H2AX



Colorimetric for CHK1, γ H2AX, vinculin

